

# scanX®

**Digital Imaging System  
In-line Erase**

Part Numbers: B7150 and B7350

## Instruction Manual



ScanX® -12 DVM  
P/N B7350



ScanX DVM  
P/N B7150

 **ALLPRO** IMAGING



# ***FOREWORD***

---

Air Techniques and its ALLPRO Imaging division have prepared this document as a guide to the proper use of two ScanX<sup>®</sup> Digital Imaging Systems with In-Line Erase, ScanX<sup>®</sup> -12 DVM and ScanX<sup>®</sup> DVM. References in this manual to Air Techniques include its division ALLPRO Imaging.

## ***TABLE OF CONTENTS***

---

<u>Section</u>	<u>Page</u>
Congratulations . . . . .	3
Warranty . . . . .	3
On-Line Warranty Registration . . . . .	3
Safety Notice . . . . .	4
Important Information . . . . .	7
Purpose of this Manual . . . . .	8
System Description . . . . .	8
Unpacking and Inspection . . . . .	9
Computer System Requirements . . . . .	10
Controls and Indicators . . . . .	11
Technical Data . . . . .	12
Abbreviations . . . . .	13
Site Selection . . . . .	13
System Setup . . . . .	14
Plate Care and Preparation . . . . .	16
Intraoral Imaging Procedures . . . . .	19
Extraoral Imaging Procedures . . . . .	22
Powering Down the System . . . . .	24
Maintenance . . . . .	24
Troubleshooting . . . . .	25
Accessories . . . . .	27

---

## **CONGRATULATIONS**

Congratulations on your purchase of the ScanX<sup>®</sup>-12 DVM or ScanX<sup>®</sup> DVM Digital Imaging System with In-Line Erase, the latest imaging product from Air Techniques, Inc./ALLPRO Imaging, a leading manufacturer of dental, medical and veterinary equipment since 1962. The ScanX<sup>®</sup>-12 DVM is capable of processing both intra-oral and extraoral imaging plates. The ScanX<sup>®</sup> DVM, however, is designed to process intraoral imaging plates only. For details, see the sections UNPACKING THE UNIT and SPECIFICATIONS. The ScanX<sup>®</sup>-12 DVM and ScanX<sup>®</sup> DVM are hereafter referred to as ScanX in this manual. Each has been designed and manufactured using state-of-the-art technology to give many years of dependable service.

This manual covers the installation, operation and maintenance of the ScanX. Review and follow the guidelines included in this manual to ensure that your ScanX gives the highest level of service.

---

## **WARRANTY**

The ScanX is warranted to be free from defects in material and workmanship from the date of installation for a period of one year. These models of the ScanX are designed solely for use in an office environment and this warranty is not applicable to other applications.

Any item returned to our factory during the warranty period through an authorized dealer will be repaired or replaced at our option at no charge provided that our inspection shall indicate it to have been defective and that the system is returned to our factory in its shipping case. Dealer labor, shipping and handling charges are not covered by this warranty.

This warranty does not apply to damage due to shipping, misuse, careless handling or repairs by other than authorized service personnel. Air Techniques, Inc./ALLPRO Imaging is not liable for indirect or consequential damage or loss of any nature in connection with this equipment.

This warranty is void if the ScanX is operated with any covers removed.

This warranty is in lieu of all other warranties expressed or implied. No representative or person is authorized to assume for us any liability in connection with the sale of our equipment.

---

## **ON-LINE WARRANTY REGISTRATION**

Quickly and easily register your new ScanX on-line. Just have your product model and serial numbers available. Then go to the ALLPRO Imaging website, **[www.allproimaging.com](http://www.allproimaging.com)**, click the Warranty Registration link and complete the registration form. This on-line registration ensures a record for the warranty period and helps us keep you informed of product updates and other valuable information.

# SAFETY NOTICE

---

This equipment has been designed to minimize exposure of personnel to hazards. While the ScanX is designed for safe operation, certain precautions must be observed. Use of the ScanX not in conformance with the instructions specified in this manual may result in permanent failure of the unit.

## General Safety Information.

- Check with your authorized dealer for packing material requirements if it is necessary to return the product to the manufacturer. Correct packing guarantees optimal safety of the device during transport. Should it become necessary to return the device to the manufacturer during the warranty period, Air Techniques will not accept claims for damage arising from using incorrect packing materials.
- Before every use, the operator must check the functional safety and the condition of the device.
- The operator must be knowledgeable in the operation of the device.
- This device is not to be used in any areas where the atmosphere could cause fire or explosion.

## Markings.

The following terms or symbols are used on the equipment or in this manual to denote information of special importance:



The ScanX is a Class I Laser Product [Class 1 Laser Product (IEC)] This warning label identifies the ScanX as such a product and describes the potential danger to humans in the event the product is opened during service. There is no laser radiation from this product when operated and maintained as instructed.

The Laser Product Accession Number is 0212282-00



Alerts users to important Operating and Maintenance instructions. Read carefully to avoid any problems.



Warns users that uninsulated voltage within the unit may be of sufficient magnitude to cause electric shock.



Indicates item used only once. Discard after use.



Indicates the ScanX is a UL Listed product.

## **ATTENTION USERS:**

Manufacturing date code on serial number label is in the format:  
MONTH YYYY.

**Authorized Dealer Service Only.**

The interior of the ScanX is only accessible by removing hardware with tools. It should be opened and serviced only by an authorized dealer service technician. Failure to heed this warning may result in equipment damage or personal injury, and will void any and all warranties. Contact your authorized dealer for service information.

**Use of Accessory Equipment.**

The use of ACCESSORY equipment not complying with the equivalent safety requirements of this equipment may lead to a reduced level of safety of the resulting system.

Consideration relating to the choice shall include:

- use of the ACCESSORY in the SUBJECT'S VICINITY
- evidence that the safety certification of the ACCESSORY has been performed in accordance to the appropriate IEC 601-1 and/or IEC 601-1-1 harmonized national standard.

Use of ACCESSORIES or cables other than those specified or provided by Air Techniques may result in increased EMISSIONS or decreased IMMUNITY of the EQUIPMENT.

**Electrical Safety Notes.**

- The line cord is the main power disconnect device.
- Use only the line cord provided with the unit.
- Use only grounded electrical connections.
- To avoid risk of electric shock, fire, short-circuit or dangerous emissions, never insert any metallic object into the equipment.
- Only use connection cable(s) delivered with the device.
- Check the device cables for possible damage before switching on. Damaged cables, plugs and sockets must be replaced before use.
- Never touch open supply outlets and subjects simultaneously.
- Do not locate unit where it could be sprayed with water, or in a damp environment.

# ***SAFETY NOTICE***

---

## **Knowledge of Warnings and Cautions.**

Users must exercise every precaution to ensure personnel safety, and be familiar with the warnings and cautions presented throughout this manual and summarized below.

In this manual, the following definitions apply for all WARNINGS and CAUTION Statements:

**WARNINGS:** Any operation, procedure or practice, which, if not strictly observed, may result in injury or long-term health hazards to personnel.

**CAUTIONS:** Any operation, procedure or practice, which, if not strictly observed, may result in destruction of equipment or loss of effectiveness or damage to equipment and Phosphor Storage Plates (PSPs).

**DANGER:** Opening the ScanX by removing any covers or components makes the equipment into a Class III b Laser Product. [Class 3B Laser Product (IEC)].

## **WARNINGS -**

### **Only trained professionals should use this device.**

Federal law prohibits the sale of this device to individuals other than licensed professionals. Use of this device, other than as described in this manual, may result in injury.

### **The ScanX contains a laser and is a Class 1 [Class 1 (IEC)] Laser Product.**

Use of controls or adjustments or performance of procedures other than those specified herein may result in hazardous radiation exposure. The laser is on only during an active scan.

### **Only a trained technician from an authorized dealer should remove a cover from the ScanX.**

Direct eye contact with the output beam from the laser may cause serious damage and possible blindness.

### **Do not open the ScanX to maintain it.**

The ScanX contains no user serviceable parts. If there is a service problem, contact your authorized dealer.

### **Operate ScanX in dry environment.**

To prevent fire or electrical shock, do not expose this appliance to rain or moisture.

### **Do not use damaged Phosphor Storage Plates (PSPs).**

Damaged PSPs may not provide reliable diagnostic images.

### **Do not reuse the Barrier Envelopes.**

Dispose of used Barrier Envelopes in accordance with all local regulations.

### **Imaging Plates (PSPs) are toxic.**

Never place an intraoral PSP in the mouth without first enclosing it in a sealed barrier envelope. Try to prevent the enveloped PSP from being bitten, chewed or swallowed.

### **Disposal of PSPs.**

Consult with your federal, national, state and local government, for rules and regulations on disposal of PSPs.

**CAUTIONS -**

**Completely clean and erase PSPs before taking an X-ray exposure.**

See the *PLATE PREPARATION* section of this manual.

**Minimize exposing an X-ray exposed PSP to light.**

Transfer the PSP into the Inlet slot quickly to minimize exposure to light.

**Use care in handling PSPs - Avoid fingerprints and scratching**

Refer to the instructions provided with the PSP package for further information on handling.

**Use of other manufacturer's imaging plates**

Do not put PSPs designed for drum-type or other scanners in the ScanX. The hooks and/or frames on the ends or around these PSPs, or PSPs of different thickness (especially thicker ones) will damage the ScanX. PSPs from another manufacturer may be used as long as the specifications are the same as those

---

**IMPORTANT INFORMATION****General Notes.**

- All instructions in this manual form an integral part of the unit. They must be kept close to the unit and in readiness whenever required. Precise observance of these instructions is a pre-condition for use of the unit for the intended purpose and for its correct operation. This manual should be passed on to any future purchaser or operator.
- Safety of the operator as well as trouble-free operation of the unit are only ensured if use is made of original equipment parts. Moreover, use may only be made of those accessories that are specified in the technical documentation or that have been expressly approved and released by Air Techniques for the intended purpose. Air Techniques cannot warranty for the safety or proper functioning of this unit in the case where parts or accessories are used that are not supplied by Air Techniques.
- There is no guarantee against damage arising where parts or accessories are used that are not supplied by Air Techniques.
- Observe the usage and storage conditions.
- Appliances which accumulate condensation or become wet through a change of temperature may only be operated after they are fully dry again.
- Air Techniques regard themselves as being responsible for the equipment with regard to safety, reliability and proper functioning only if assembly, resetting, changes or modifications and repairs have been carried out by an authorized dealer and if the equipment is used in conformity with the instructions contained in this manual.
- The device conforms to the relevant safety standards valid at this time.
- Any reprinting of the technical documentation, in whole or in part, is subject to prior written approval by Air Techniques.

## ***IMPORTANT INFORMATION***

---

### **Correct Usage**

- Operation of the ScanX may only be carried out by suitably qualified personnel.
- The ScanX is only to be used in the processing of exposed PSPs.
- The ScanX should be used in a room equipped for it.
- Room temperature should be in the range 50 to 105°F (10 to 40°C) with relative humidity between 5 and 95%.
- If the device is brought into the room of operation from a cooler environment, condensation can build up. Do not connect the device until it has warmed up to room temperature and is absolutely dry.
- This room should be free of all possible interferences (e.g. strong magnetic fields), as these could affect the operation.
- The ScanX may only be operated together with authorized software such as Visix or VetRay Imaging Software.
- Correct usage includes observing all installation and operating instructions and adherence to the set-up, operation and maintenance instructions.
- Any use, above and beyond that described in this manual as correct usage, will invalidate the warranty.

### **Incorrect Usage**

- Any use that is not described in this manual as correct usage is considered as incorrect usage. The manufacturer is not to be held liable for any damage caused as a result of incorrect usage. The operator bears all risks.

## ***PURPOSE OF THIS MANUAL***

---

This manual provides the information necessary for the setup, operation and routine care and maintenance of the the ScanX<sup>®</sup>-12 DVM (P/N B7350) and the ScanX<sup>®</sup> DVM (P/N B7150) Digital Imaging Systems with In-Line Erase.

This manual is not to be used as a replacement for training in radiography.

For information regarding the computer system and imaging software, refer to the appropriate documentation provided with your computer hardware and software.

## ***SYSTEM DESCRIPTION***

---

The ScanX is a digital radiography system that utilizes reusable Phosphor Storage Plates (PSP) in place of X-ray film to produce diagnostic quality intraoral and extraoral digital radiographs. The ScanX produces a digital image by scanning PSPs, which have been exposed to X-rays. The ScanX allows computer storage, processing, retrieval and display of the computed radiographic images utilizing a user supplied software and computer. An additional feature of the ScanX consists of an in-line plate eraser function that removes the latent image from the plate immediately after scanning. This design provides an efficient one-operation scanning and erasing process leaving the user with a PSP ready for the next X-ray procedure.

---



## Unpacking

The ScanX may be shipped in a very special shipping case covered by a double-wall corrugated over-packaging. A deposit fee has been paid for this case, which may be returned to Air Techniques, Inc./ALLPRO Imaging for a full refund of the fee using a Return Authorization (RA) number, or retained, without refund of the fee, to protect the ScanX during transport or future shipping. Retain the over-packaging to return the shipping case.

## Included System Components

Each ScanX consists of the indicated main assembly and accessory kit as listed below: (See SPECIFICATIONS for ratings and identification for specific models.)

---

	<b>ScanX DVM, P/N B7150</b>	<b>ScanX-12 DVM, P/N B7350</b>
Main Assembly	B7110V	B7310V
<u>Accessory Kit containing:</u>		
Power Supply	B7095	B7095
Power Cord	73096	73096
Computer Connector Cable, USB	B3554	B3554
Instruction Manual	B7157	B7157
PSP Protective Cushion Kit	-	74030B
Plate Guides (Sizes 0, 1, 3, Qty. 1 ea. and Size 2, Qty. 4)	73444	73444
ScanX Cleaning Sheet Sample Kit	-	B2030
Drivers, Utilities and Instruction Manual Disk	B7352	B7352

---

## Inspection

Verify that all listed items were received. If any item is missing, notify your authorized dealer. Unpack each component of the ScanX and inspect for physical damage such as scratched panels, damaged connectors, etc. If any damage is noted, notify your authorized dealer immediately so corrective action can be taken.

# ***COMPUTER SYSTEM REQUIREMENTS***

---

**IMPORTANT:** To operate the ScanX, it must be connected to a compliant Computer System, and the computer must be loaded with an authorized Imaging Software such as Visix or VetRay. The Computer System is not provided by Air Techniques. Contact your dealer for available Computer System and Software options.

## **Computer System Recommendations**

The Computer System (computer, monitor, etc.) and any related peripheral or other equipment, supplied by the user, or a third party, must comply with the requirements for "Information Technology Equipment" (ITE) as specified in IEC 60950 (EN 60950).

The minimum computer system requirements necessary to operate the ScanX are listed below. Items listed with an asterisk (\*) are required.

Operating System:	* Windows 2000 Professional for an Intel 32-bit processor with Service Pack 4 or later, or Windows XP Professional for an Intel 32-bit processor with Service Pack 1 and the KB B22603 update or later.
USB Port:	* Must be USB 1.1 or 2.0 or later
CPU:	2.8 GHz Pentium IV
RAM:	1 GB
Hard Drive:	* 200MB available disk space required to start scanning
Monitor (1024 x 768 Resolution):	SVGA 17", 1024 x768 or higher resolution, contrast ratio 450:1, .22 dot pitch capability. For optimum viewing a CRT is recommended.
Video Display Adapter:	32 MB RAM
Peripherals:	* CD ROM Drive Standard Keyboard & Mouse Backup Device External Surge Protector Power supply backup
Image Management Software:	*Authorized software is required

# COMPUTER SYSTEM REQUIREMENTS

## System Properties.

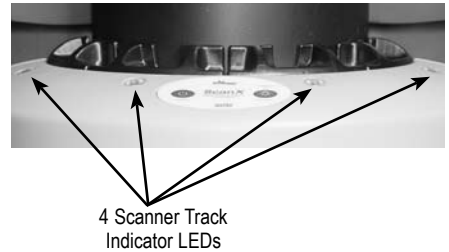
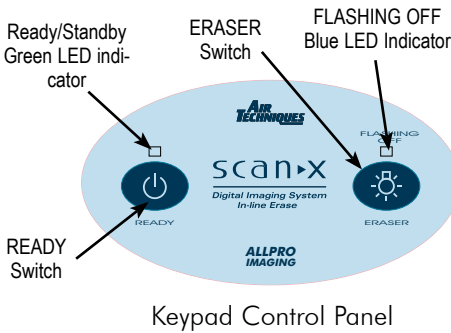
If unsure of the operating system version installed, check that it meets the necessary requirements by checking the **System Properties** window.

This is done simply by right clicking the **My Computer icon**. Selecting **Properties** from the menu list displays the **System Properties** window as shown. The installed operating system version is listed under the **General** tab.

The **System Properties** window can also be opened from the Desktop **Start** button. Just press the **Start** button and select **Settings→Control Panel** and then click **System** icon.



# CONTROLS AND INDICATORS



Keypad Control Panel

4 Scanner Track Indicator LEDs

## Keypad Control Panel

- |                                   |   |
|-----------------------------------|---|
| READY Switch                      | Toggles between the Standby and Ready mode as follows:<br>1. Press to switch from the Standby mode to the Ready mode.<br>2. Press and hold down for at least 2 seconds to switch to the Standby mode from the Ready mode. |
| Ready/Standby Green LED indicator | Illuminates green to indicate that the ScanX is Ready for operation. When extinguished, it indicates that the ScanX is in the Standby mode.   |
| ERASER Switch                     | Toggles between turning the Erase function OFF and ON. This switch has <u>no</u> effect once the plate scanning or erasing starts.  |
| FLASHING OFF Blue LED indicator   | Illuminates steady blue to indicate that the Erase function is ON and PSPs will be erased after scanning.<br>Flashes blue to indicate that the Erase function is OFF and PSPs will <u>not</u> be erased after scanning.   |

## 4 Scanner Track Indicator LEDs

- Illuminate green when the Scanner has been activated, indicating that a PSP can be fed into the ScanX.
- Illuminate yellow, indicating the PSP has been sensed and the Scanner is transporting the PSP.

# TECHNICAL DATA

---

## Electrical Requirements:

Supply Voltage: 100 to 240VAC +/- 10%, 50/60 Hz  
Supply Current: 1.2 A Maximum  
Line Cord: North American style 10 foot long  
Hospital Grade power cord, P/N 73096.  
Power Supply: 24 Volt Power Supply, P/N B7095 provided

## Physical Properties:

<u>ScanX Part Number</u>	<u>B7110V</u>	<u>B7310V</u>
Depth (inches)	15.13	15.4
Width (inches)	15.0	15.0
Height (inches)	15.5	27.8
Weight (pounds)	43	50

## Environmental Conditions:

Unit in Operation  
Temperature: 50°F to 105°F (10°C to 40°C)  
Humidity: 5% to 95% RH  
Heat emission <90W  
Storage and Transport  
Temperature: -21°F to 130°F (-29°C to 54°C)  
Humidity: 5% - 95% (Non-condensing)

**Note:** Resolution of the ScanX is dependent on operating mode and specific imaging plate type used.

## Resolution Range:

	<u>P/N B7110V</u>	<u>P/N B7310V</u>
Horizontal:	10 to 14 (lp/mm)	2.5 to 14 (lp/mm)
Vertical:	10 to 18+ (lp/mm)	2.5 to 18+ (lp/mm)

## Compliance Data:

Laser Class: Class I Laser Product (21 CFR 1040.10)  
Class 1 Laser Product (IEC 60825-1)  
Laser Product Report  
Accession Number: 0212282-00

## Installation Category:

1

## Pollution Degree:

2

## User Replacement Items:

Power Supply, Line Cord, Plate Guides, PSPs and Computer Connector Cable

## IEC601-1 Classification:

Class 1, Transportable, Continuous Operation,  
Equipment not suitable for use in the presence of flammable anaesthetic mixture(s). Protection against ingress of liquids -Ordinary

## Electromagnetic Interference:

Electromagnetic interference between the equipment and other devices can occur. Do not use the equipment in close conjunction with sensitive devices, or devices creating high electromagnetic disturbances.

---

## ***ABBREVIATIONS***

Abbreviations used in this manual are summarized below.

A	ampere(s)	MB	megabytes ( $2^{20} \approx 10^6$ bytes)
AC	alternating current	mm	millimeter ( $10^{-3}$ m)
CD-ROM	compact disk, read-only memory	MONTH YYYY	date (Month, 4 digit year)
CFR	Code of Federal Regulations	Phosphor	a luminescent material
CPU	central processing unit (your computer)	PN	part number
cm	centimeter	PSP	phosphor storage plate (imaging plate)
D	depth	RAM	random access memory
GB	gigabyte ( $2^{30} \approx 10^9$ bytes)	RH	relative humidity
GHz	Gigahertz ( $10^9$ of Hertz)	SVGA	Super Video Graphics Array
H	height	USB	Universal Serial Bus
Hz	Hertz (cycles per second)	UL	Underwriters Laboratories
IEC	International Electro-tech- nical Commission	V	Volts
IMS	Image Management Software	W	Watts, width
LED	Light emitting diode	°C	degree Celsius
lbs.	pounds	°F	degree Fahrenheit
lp/mm	line pair per mm	", in	inch
lux	a measure of light intensity		

---

## ***SITE SELECTION***

**Note:** The ScanX is designed to be installed by your authorized dealer. The dealer or user must provide appropriate and compliant computer hardware and software.

The ScanX may be located almost anywhere in the office. Follow these guidelines for optimum performance:

- Lighting conditions: Set up the scanner in ordinary room light, however, direct sunlight and light fixture(s) above and near the ScanX producing more than 400 lux of light at the PSP inlet must be avoided.
- Provide a stable, flat countertop large enough to hold the scanner, plus provide a working area for resting and opening cassettes.
- Locate the computer within 6 feet.
- Access to a hospital grade grounded electric Mains AC outlet using the line cord provided, must be within line cord length.

**Note:** Authorized Imaging Software, such as Visix or VetRay, supplied by the dealer or other company, must be installed on the computer in order to operate the ScanX.

### ScanX Drivers and Utilities Installation

Before connecting the ScanX to your computer or attempting to use it for the first time, run the Setup program on the ScanX Drivers and Utilities Disk included with the ScanX. Normally, this program runs automatically when the CD is inserted into the drive for the first time. If not, run the Setup program located in the root directory of the CD (typically D:\Setup.exe).

The Setup program guides you through updating the library files on your computer, which must be completed before the ScanX will operate properly. More information can be found in the Installation Instructions and Notes file on the ScanX Drivers and Utilities Disk included with the ScanX.

### ScanX Connection Procedure

Refer to Figure 1 and perform the following procedure to connect the ScanX for operation for the first time.

1. Select a location that meets the SITE SELECTION guidelines.
2. Set up the computer according to the manufacturer's recommendations. Make sure that the computer meets all requirements listed on page 10.
3. Verify that an authorized Imaging Software, such as Visix or VetRay, is installed properly on the computer.
4. Verify that the supplied ScanX Drivers and Utilities Disk which contains the USB drivers was properly installed per instructions above.

**Note:** Always make sure to use the same USB port whenever re-connection of the USB cable is necessary.

5. Connect the high speed USB cable between the USB Type B connector located on the ScanX rear panel and the USB Type A connector located on the computer.

**Note:** Connect the 24V Power Supply Adapter to the ScanX prior to plugging the line cord into the Mains outlet.

6. Connect the 24V Power Supply Adapter Output Connection Cable to the ScanX Power Input Jack.
7. Connect the line cord between the Mains outlet and the 24V Power Supply Adapter. The scanner is now in the Standby mode.
8. Switch the scanner from Standby to ON by pressing the membrane READY switch ( ) located on the Keypad Control Panel on the top of the scanner. Verify that both the green and blue LED indicators above the READY and ERASER switches, respectively, illuminate.

**Note:** The Found New Hardware Wizard may appear each time you plug the ScanX into a different USB port on your computer.

9. With both the ScanX and computer turned on, Windows detects the ScanX as a new USB Device and the Found New Hardware Wizard will appear. Windows should automatically find the drivers installed from the ScanX Drivers and Utilities Disk. After the wizard completes the first time, it will appear and complete a second time and then third, and final time.

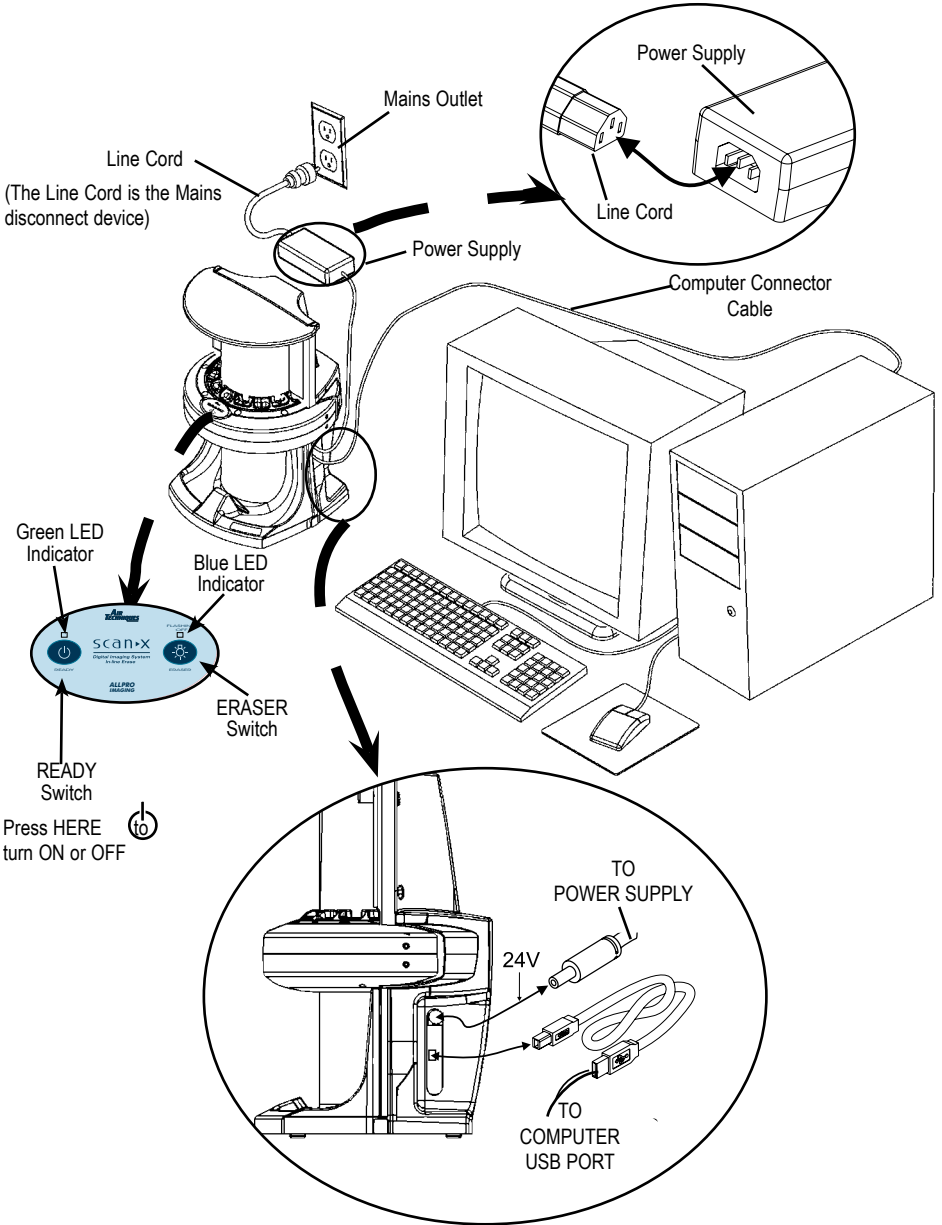


Figure 1. Typical ScanX Installation

# PLATE CARE & PREPARATION

---

Prior to performing the Intraoral and Extraoral imaging procedures provided on the following pages, the user must be familiar with the care, handling and preparation of the PSP in order to ensure successful image scanning. Figure 2 shows the configuration of a typical Intraoral Size #2 PSP and Figure 3 shows a typical Extraoral plate.

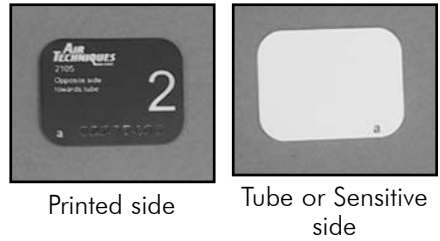


Figure 2. Intraoral PSP Configuration

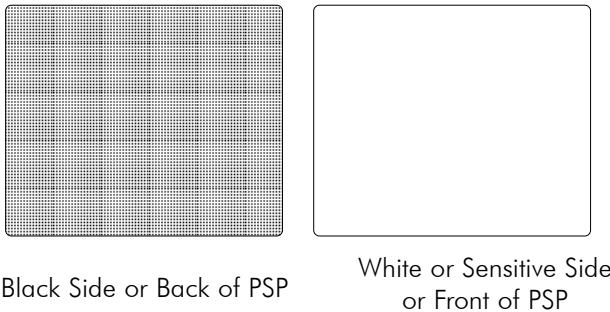


Figure 3. Typical Extraoral Plate Configuration

## Handle PSPs with Care.

- Avoid scratching or soiling PSPs.
- Do not bend PSPs or apply unnecessary pressure.
- Do not store PSPs in a hot or moist area.
- Protect the PSPs from direct sunlight and ultraviolet rays.
- Pick up the PSPs using two fingers around the edges to avoid unnecessary contact with the plates.

**CAUTION:** Always use a Barrier Envelope for each Intraoral plate. Exercise care in handling the plate so as not to scratch the sensitive surface or nick the edges.

## Plate Protection

When storing or transferring PSPs use a Plate Transfer Box for Intraoral PSPs or an X-ray Cassette for Extraoral PSPs.

**Plate Transfer Box.** Place the Intraoral PSP covered with a Barrier Envelope into the Plate Transfer Box with the sensitive (front) side of the PSP facing down.

**Note:** Cassettes must **not** contain intensifying screens when using PSPs.

**X-ray Cassette.** Place the Extraoral PSP into the appropriate X-ray Cassette with the sensitive (front) side of the PSP towards the Tube-side of the cassette and close cassette.



**IMPORTANT:** PSPs must always be erased prior to use.

**Note:** Use PSPs within 24 hours of last erasure. Repeat erasing process if PSPs have been stored longer than 24 hours.

### Erase the PSP

Each Intraoral and Extraoral PSP should be used (i.e. X-ray exposed and scanned) within 24 hours of erasure since natural radiation will add noise to the PSP. Erase PSPs by simply using the ScanX In-Line Erase Feature. This can be accomplished using one of two methods as follows:

**Note:** Both erasing methods will result in an erased PSP suitable for reuse. The user will not observe any difference in ScanX operation when using either method.

#### Method #1

Perform the Imaging Procedures for Intraoral PSPs on page 20 or the procedures for Extraoral PSPs on page 22. Except when performing step 4 of either Activate Scanner procedure, select the Erase option from the installed authorized imaging software to activate the ScanX. This method does not scan the plate and no image will be acquired.

#### Method #2.

Perform the normal Imaging Procedures for Intraoral PSPs on page 20 or the procedures for Extraoral PSPs on page 22. This method scans the plate and the imaging software may acquire a “junk image” (scanned latent plate image) that should be subsequently deleted from the imaging software.

### Cleaning Phosphor Storage Plates

For the best images, PSPs should be handled carefully and kept clean. Use the following procedure to clean plates:

1. Use lint-free, 100% cotton gauze (not cotton balls). Gently wipe the cotton gauze over the dry Plate surface. Wipe back and forth and then in a circular motion.
2. To clean any remaining stains, dampen the gauze in denatured ethyl alcohol (1% denaturant) and wipe using the same motion as above.
3. Completely dry the surface by wiping with another piece of cotton gauze. Make sure that the PSP is completely dry before use.

**IMPORTANT:** Do not soak overnight.

**Note:** A 2% Gluteraldehyde solutions will not damage the PSP.

### Disinfecting the Phosphor Storage Plates

There is no reason to routinely disinfect the PSPs unless contamination is suspected. If a PSP has touched a contaminated surface, it may be immersed briefly in a cold sterilant according to sterilant manufacturers directions. Do not emerse the plate if there is any evidence of deep scratches in the surface of the plate or nicks in the edges of the plate. After disinfection, clean and dry the plate using the instructions above.

### Disposal of Phosphor Storage Plates

Consult with your federal, national, state and local government, for rules and regulations on disposal of Phosphor Storage Plates.

## **PLATE CARE & PREPARATION**

---

### **Barrier Envelope Handling**

Always guard against contamination by using standard infectious control procedures when handling individual barrier envelopes. It is best to discard suspected contaminated envelopes since no cleaning or disinfection procedure exist or are required for barrier envelopes.



The Barrier Envelope must be used only once and disposed of properly in accordance with local code.

### **Preparing Intraoral Plates for Patient Use**

Insert the erased PSP into the Barrier Envelope so the printed side of the PSP is visible through the transparent side of the envelope. Peel off the adhesive strip and seal the envelope. See Figures 4a - 4c below.



Figure 4a  
Insert the PSP.



Figure 4b  
Peel off the adhesive strip.



Figure 4c  
Seal the Barrier Envelope.

- Note:**
1. The orientation letter “a”, printed on the PSP, may be used for reference as you would use the dot on an intraoral X-ray film. In addition, a backwards “a” (i.e. “ ”), appearing in an image, is an indication that the image has been flipped.
  2. If using holders with alligator clips, it is advisable to file down the points to avoid puncturing the Barrier Envelope. It is important to take care not to puncture the Barrier Envelope or damage the PSP.

## **Take an X-ray Image**

Put an image on the PSP by performing the following procedure.

1. Place the erased intraoral PSP in the sealed Barrier Envelope into the subject's mouth exactly as you would use X-ray film. Make sure the opaque side of the Barrier Envelope is facing the tubehead.
2. Take the exposure. The X-ray dose may typically be reduced by 80 - 85% of that required for D-speed intraoral film (depending on X-ray system used; the actual X-ray dose should be determined through experimentation).
3. Wearing gloves, remove the exposed PSP from the subject's mouth and place to the side making sure the sensitive side of the barrier envelope is facing away from any light source.
4. Repeat steps 1 through 3 as necessary to complete the subject's X-ray series. When all necessary plates in the X-ray session have been exposed, prepare each plate by performing the procedure below.

## **Preparing the Exposed Plate for Scanner Processing**

1. Disinfect the Barrier Envelope (with plate still inside) and your gloves by washing with disinfectant hand soap and water. Dry the Barrier Envelope thoroughly.
2. Remove gloves and wash any powder from hands. Powder on a PSP will degrade the image, and an accumulation of powder in the scanner will lead to degradation of scanner performance.

**IMPORTANT:** Be sure that the sensitive side of the PSP is facing down when it lands inside the box (See Figure 5). If it is not sensitive side down, **TURN IT OVER IMMEDIATELY**. Failure to do so may result in erasure of the PSP.

3. Open the Plate Transfer Box with the lid away from you. Then, remove the exposed PSP from its washed and dried envelope as follows:
  - a. Hold the enveloped exposed PSP, with the printed side facing up, parallel to and about an inch above the open Plate Transfer Box.
  - b. Tear the envelope lengthwise starting at the notch to eject the PSP into the open Transfer Box. See Figure 5.



Figure 5  
Ejecting a Plate into the  
Plate Transfer Box

4. Bring the Plate Transfer Box with all the exposed PSPs properly prepared to the ScanX. The PSP is now ready to be scanned to read the image from the PS by performing the Intraoral Imaging Procedures.

# INTRADURAL IMAGING PROCEDURES

**Configure the Intraoral Plate Guides.** If the desired Plate Guides are not in place, install these Guides at this time. Do not operate the scanner without a full complement of four Guides in place. Any combination of Guides may be used. See Figure 6.



Figure 6. ScanX with a full Complement of Plate Guides in Place.

**IMPORTANT:** Transfer the PSP from the Plate Transfer Box to the Plate Guide slot quickly. Always keep the sensitive side away from any light source to minimize image loss.

## Activate Scanner

Activate the ScanX by performing the following procedures.

1. Make sure the ScanX and computer components are correctly connected as shown in Figure 1.
2. Switch the scanner from Standby to ON by pressing the membrane READY switch (⏻) located on the Keypad Control Panel on the top of the scanner.
3. Verify that both the green and blue LED indicators above the READY and ERASER switches, respectively, illuminate. (Default mode has eraser ON.)

**Note:** Change in motor noise pitch levels is normal when switching to different resolution setting selections.

4. Use the user-supplied authorized Imaging Software to activate the Scanner and to select the desired image type and resolution.
5. Verify that the four Scanner track indicators illuminate green when the Scanner has been activated, indicating that PSPs can be fed into the corresponding Plate Guide.

## Scanning and Erasing Plates

Scan and erase an intraoral PSP in one operation by performing the following procedures.

1. Carefully open the Plate Transfer Box.
2. Grasp a PSP by long edges between your thumb and index finger. See Figure 7.
3. With printed side facing you, carefully and quickly insert the PSP into the corresponding Plate Guide slot as far as possible.
4. Immediately press the PSP all the way down with your fingertip (from position Figure 8 to position Figure 9) until the scanner's transport mechanism takes over and the PSP moves down on its own.
5. Verify that the track light illuminates yellow, indicating the Plate Guide slot is in use, the PSP has been sensed and the Scanner is transporting the PSP.



Figure 7. PSP Pick-up.



Figure 8  
Feeding Intraoral Plate.



Figure 9.  
Fully Inserted Plate.

## Scanning and Erasing Plates (continued)

**Note:** Up to four PSPs can be processed simultaneously. One PSP can be inserted into each Plate Guide at a time as long as the corresponding track indicator light is illuminated green. The next PSP may be fed into a Plate Guide slot only after the corresponding track indicator LED changes from yellow to green.

6. Observe that a red glow emanates from the scanner exit slot.
7. Repeat steps 2 through 6 to process additional PSPs as necessary. Another PSP may be fed into any Plate Guide slot as long as the track indicator light illuminates green.
8. Observe that each scanned and erased PSP drops into the receiving tray at the bottom of the scanner. Since the ScanX default operation is with the erase mode enabled (blue LED indicator above the ERASER switch is steadily illuminated), each PSP is erased and ready for reuse.
9. Observe that all transport indicators illuminate green and the red glow from the exit slot extinguish after the last PSP drops to the tray.

**CAUTION:** Always use exercise care in handling the PSPs so as not to scratch the sensitive surface or nick the edges.

10. Retrieve the processed (scanned and erased) PSPs for reuse or storage. Make sure not to scratch the sensitive surface or nick the edges when removing from the scanner outlet.
11. View and save each scanned image using the user-supplied authorized Imaging Software.

**IMPORTANT:** PSPs will **not** be erased after scanning when operating the ScanX with the eraser disabled. PSPs must always be erased prior to exposure to X-rays for new images.

## Scanning Plates without Erasing

The ScanX can be operated with the in-line eraser feature turned off. When the eraser mode is disabled, the ScanX scans the same as when the eraser is enabled except that the PSPs are **not** erased after scanning. Scan an intraoral PSP without erasing the image by performing the following procedures.

1. Activate the scanner by performing the procedures on previous page.

**Note:** Upon activation, the ScanX defaults with the eraser mode enabled. This must be disabled prior to scanning to prevent erasing of the scanned PSP.

2. Disable the eraser mode of operation by pressing the membrane ERASER switch located on the Keypad Control Panel. See Figure 10.
3. Verify that the blue LED indicator above the ERASER switch blinks blue to indicate that the Erase function is OFF. PSPs will **not** be erased after scanning.
4. Insert the exposed PSPs to be scanned into the ScanX Plate Guides by performing the Scanning and Erasing Plates procedures provided on the previous page.
5. The scanned PSPs still contain latent images that require erasure. Make sure to erase each PSP prior to reuse for new images.

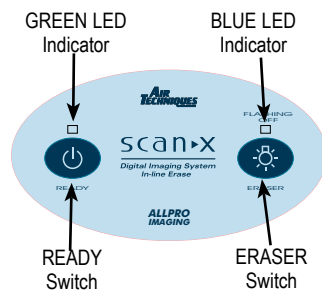


Figure 10.  
ScanX Keypad Control Panel

# EXTRAORAL IMAGING PROCEDURES

---

**Note:** Cassettes must **not** contain intensifying screens when using PSPs.

## Take an X-ray Image

Put an image on the extraoral PSP by performing the following procedure.

1. Place the erased PSP into the appropriate X-ray cassette, with the Tube side (sensitive side) of PSP towards Tube side of cassette.
2. Load cassette into the exposure device as previously done for film, and take the exposure following the X-ray device manufacturer's instructions for PSPs.
3. Bring the cassette containing the exposed extraoral PSP to the ScanX. The PSP is now ready to be scanned.

## Activate Scanner

Activate the ScanX by performing the following procedures.

1. Make sure the ScanX and computer components are correctly connected as shown in Figure 1.
2. Switch the scanner from Standby to ON by pressing the membrane READY switch (⏻) located on the Keypad Control Panel on the top of the scanner.
3. Verify that both the green and blue LED indicators above the READY and ERASER switches, respectively, illuminate. (Default has eraser mode ON)

**Note:** Change in motor noise pitch levels is normal when switching to different resolution setting selections.

4. Use the user-supplied authorized Imaging Software to activate the Scanner and to select the desired image type and resolution.
5. Verify that the four Scanner track indicators illuminate green when the Scanner has been activated, indicating a PSP can be fed into the ScanX.

- Note:**
1. Leave the four Plate Guides in place when scanning extraoral PSPs.
  2. Only one extraoral exposed PSP can be fed into the ScanX at a time. The next PSP may be fed only after all four track indicator light LEDs change from yellow to green.

## Scanning and Erasing Plates

Scan and erase an extraoral PSP in one operation by performing the following procedures.

1. Orient the cassette so that the Tube side is facing down and the hinge is away from you.
2. Open the cassette and grasp the PSP by its ends with your finger tips, and quickly (minimizing exposure to ambient light) move it to the ScanX, with Tube side of PSP towards ScanX.
3. Position the extraoral plate behind the four Plate Guides against the curved surface and gently slide the plate down (See Figure 11) until the transport mechanism takes over and the plate moves on its own.
4. At this point, all four track lights will turn yellow, indicating the PSP has been sensed and the Scanner is transporting the PSP.



Figure 11.  
Feeding an Extra Oral  
Plate into the ScanX

## **Scanning and Erasing Plates (continued)**

5. Observe that a red glow emanates from the scanner exit slot.
6. Repeat steps 1 through 5 to process additional PSPs as necessary. Another PSP may be fed into the ScanX when all four track indicator lights illuminate green.
7. Observe that the scanned PSP exits through the scanner arch. Since the ScanX default operation is with the erase mode enabled (blue LED indicator above the ERASER switch is illuminated), the PSP is erased and ready for reuse.
8. Observe that all transport indicators illuminate green and the red glow from the exit slot extinguishes after the last PSP drops to the tray.
9. Retrieve the processed (scanned and erased) PSP for reuse or storage in an X-ray cassette. Make sure not to scratch the sensitive surface or nick the edges when removing from the scanner outlet.
10. View and save the image using an user-supplied authorized Imaging Software.

**IMPORTANT:** PSPs will not be erased after scanning when operating the ScanX with the eraser disabled. PSPs must always be erased prior to exposure to X-rays for new images.

## **Scanning Plates without Erasing**

The ScanX can be operated with the in-line eraser feature turned off. When the eraser mode is disabled, the ScanX scans the same as when the eraser is enabled except that the PSPs are not erased after scanning. Scan an extraoral PSP without erasing the image by performing the following procedures.

1. Activate the scanner by performing the procedures on previous page.

Note: Upon activation, the ScanX defaults with the eraser mode enabled. This must be disabled prior to scanning to prevent erasing of the scanned PSP.

2. Disable the eraser mode of operation by pressing the membrane ERASER switch located on the Keypad Control Panel. See Figure 10.
3. Verify that the blue LED indicator above the ERASER switch blinks blue to indicate that the Erase function is OFF. The extraoral PSP will not be erased after scanning.
4. Insert the exposed PSP to be scanned into the ScanX by performing the Scanning and Erasing Plates procedures provided on the previous page.
5. Retrieve the processed (scanned only) PSP and store in an X-ray cassette. The scanned PSPs still contain latent images that require erasure. Make sure to erase each PSP prior to reuse for new images.

## ***POWERING DOWN THE SYSTEM***

---

**IMPORTANT:** Never power down the system during a scanning session.

The ScanX is designed to be left on continuously during the active day. At the end of the day, or whenever desired, power down the system simply by pressing and holding the membrane READY switch (⏻) on the Keypad Control Panel for approximately two seconds, until the green LED above the READY switch extinguishes.

## ***MAINTENANCE***

---

### **Maintenance Procedures**

The ScanX is designed for many years of trouble-free operation. Maintenance as described herein is minimal.

**IMPORTANT:** Do **not** spray solvents or liquid directly on the scanner.

### **Cleaning the ScanX**

Turn off the ScanX disconnect the line cord from the Mains wall outlet and disconnect the computer connection cable from the ScanX before cleaning. Wipe the outside surfaces with a soft paper towel dampened with a disinfectant solution or non-abrasive household cleaner. Be careful not to allow solvents TO RUN OR DRIP into the ScanX. This could cause damage to the ScanX. Allow to air dry before plugging in or turning back on.

**Note:** ScanX Cleaning Sheets **cannot** be used on the ScanX<sup>®</sup> Intraoral (P/N B7100) because of height limitations.

### **Cleaning the Plate Transport**

Over time, small debris and dust may accumulate in the plate transport mechanism causing a loss in image quality and possible damage to the PSPs.

To ensure optimal performance of the ScanX<sup>®</sup> (P/N B7350), the plate transport should be cleaned once per week using a new ScanX Cleaning Sheet each time. Sample sheets are included with the ScanX and additional sheets can be purchased from your dealer. Refer to ACCESSORIES page 27.

### **Disinfecting the ScanX**

No disinfection is required for the ScanX.

### **Cleaning the Plate Guides**

Wash the Plate Guides with a non-abrasive cleaner and water. Dry thoroughly.

**IMPORTANT:** Plate Guides must not be put in an autoclave.

**Note:** Always use standard infection control procedures when handling devices that contact the patient.

### **Disinfecting the Plate Guides**

There is no reason to routinely disinfect the Plate Guide unless contamination is suspected. If a Plate Guide has touched a contaminated surface, it may be immersed briefly in a cold sterilant according to sterilant manufacturers directions. After disinfection, clean and dry the Plate Guide using the instructions above.



Trouble	Possible Cause	Corrective Action
1. No power/ No green light on membrane switch	<ul style="list-style-type: none"> <li>• Not plugged in.</li> <li>• No power at Mains Outlet</li> <li>• Defective power supply</li> </ul>	<ul style="list-style-type: none"> <li>• Check the line cord connection is firmly plugged in.</li> <li>• Make sure outlet is grounded and has power.</li> <li>• Call your authorized Air Techniques dealer.</li> </ul>
2. Green, Blue or Yellow indicator light does not work.	<ul style="list-style-type: none"> <li>• Defective light or circuitry.</li> </ul>	<ul style="list-style-type: none"> <li>• Call your authorized Air Techniques dealer.</li> </ul>
3. Image Management Software does not recognize the ScanX when selected.	<ul style="list-style-type: none"> <li>• Inadequate Computer System.</li> <li>• The ScanX has not been turned on.</li> <li>• The computer connection cable is loose or defective.</li> <li>• The computer does not recognize that the ScanX is connected.</li> <li>• ScanX hardware problem.</li> </ul>	<ul style="list-style-type: none"> <li>• Verify Computer System requirements (Page 10).</li> <li>• Make sure that the READY switch is set to ON and the green indicator light is illuminated.</li> <li>• Reconnect the cable. Check for tightness. Replace if necessary.</li> <li>• Verify that the Setup program was correctly installed (Page 14).</li> <li>• Call your authorized Air Techniques dealer.</li> </ul>
4. Plate does not scan properly.	<ul style="list-style-type: none"> <li>• The PSP was not pushed far enough into the ScanX.</li> </ul>	<ul style="list-style-type: none"> <li>• Fully feed the PSP into the Plate Guide.</li> </ul>
5. No image appears after scanning.  Important: Do not allow the PSP to be exposed to light between taking an X-ray and scanning with the ScanX.	<ul style="list-style-type: none"> <li>• The PSP fed backwards (printed side towards ScanX).</li> <li>• The PSP was erased prior to scanning.</li> <li>• Hardware failure.</li> <li>• X-ray source failed.</li> </ul>	<ul style="list-style-type: none"> <li>• Quickly refeed the plate with the printed side out. If a substandard image results, retake image.</li> <li>• Feed the PSPs into the scanner immediately and quickly after removal from the Plate Transfer Box or the cassette.</li> <li>• Call your authorized Air Techniques dealer.</li> <li>• Call your X-ray service dealer.</li> </ul>
6. Image is too dark.	<ul style="list-style-type: none"> <li>• PSP has been overexposed</li> </ul>	<ul style="list-style-type: none"> <li>• Use software to adjust brightness. If this is not possible, retake image with proper (lower) exposure and a newly erased PSP.</li> </ul>

# **TROUBLESHOOTING**

---

<b>Trouble</b>	<b>Possible Cause</b>	<b>Corrective Action</b>
7. Intraoral image appears skewed on monitor.	<ul style="list-style-type: none"><li>• PSP was fed skewed either behind or without a Plate Guide in place.</li><li>• Plate Guide used was not the proper size.</li></ul>	<ul style="list-style-type: none"><li>• Verify that Plate Guide is in place and PSP is fed into slot or if a Size 4 PSP, it is fed in straight behind a Guide.</li><li>• Check PSP size and ensure that the correct Plate Guide is in place.</li></ul>
8. Extraoral image appears skewed on monitor.	<ul style="list-style-type: none"><li>• PSP was fed skewed.</li></ul>	<ul style="list-style-type: none"><li>• When inserting PSP into feed slot, be sure to “feel” for resistance of light seal brush, align PSP, and then push down uniformly on top edge of PSP.</li></ul>
9. Image contains ghost images or shadows.	<ul style="list-style-type: none"><li>• PSP was not completely erased prior to use.</li><li>• Imaging Plate was exposed with the back of the IP facing the tubehead.</li><li>• PSP has been stored too long in barrier envelope or cassette.</li><li>• Partial erasure of the image due to exposure to light during handling of the PSP</li></ul>	<ul style="list-style-type: none"><li>• Make sure ScanX is operating with eraser turned on (blue LED indicator above the ERASER switch is illuminated steadily).</li><li>• Make sure the plates are inserted properly into the barrier envelope or cassette with the proper orientation to the X-ray source.</li><li>• Do not store PSPs in barrier envelopes or cassettes for more than 24 hours.</li><li>• Do not leave exposed PSPs in well lit areas. Even in barrier envelopes, some light may penetrate and partially erase the PSP. Transfer PSPs from their protective barriers to the ScanX within one hour of exposure.</li></ul>
10. Image shows artifacts.	<ul style="list-style-type: none"><li>• The PSP surface is not clean and has dirt, stains or scratches on it.</li><li>• ScanX plate transport path may contain debris.</li></ul>	<ul style="list-style-type: none"><li>• Clean the PSP. If the PSP is scratched or stained, do not reuse.</li><li>• Clean transport path using a ScanX Cleaning Sheet.</li></ul>
11. Intraoral PSP does not drop into the receiving tray	<ul style="list-style-type: none"><li>• PSP may have clung to the bottom of transport arch due to static electricity.</li></ul>	<ul style="list-style-type: none"><li>• Look below transport arch and gently touch the PSP to allow it to drop.</li></ul>

The following lists the ordering number and description for accessory components available to maintain the ScanX to meet your professional needs. Contact your authorized dealer for information.

<b>Description</b>	<b>Quantity</b>	<b>Part Number</b>
ScanX Cleaning Sheets*	Box of 12	B2010
	Box of 25	B2020
ScanX Dust Cover Kit	1	74050
SealX-2 Barrier Envelope Sealer	1	B4000
Intraoral Plate Guides		
Size 0	1	73566-0
Size 1	1	73566-1
Size 2	1	73566-2
Size 3	1	73566-3
Intraoral Phosphor Storage Plates		
Size 0	2 per package	73445-0
Size 1	2 per package	73445-1
Size 2	4 per package	73445-2
Size 3	2 per package	73445-3
Size 4	1 per package	73445-4
Intraoral Barrier Envelopes		
Size 0	100 per package	73248-0
Size 1	100 per package	73248-1
Size 2	300 per package	73248-2
Size 3	100 per package	73248-3
Size 4	50 per package	73248-4
Medical Phosphor Storage Plates		
8 x 10 inches	1 per package	73578-8M
10 x 12 inches	1 per package	73578-10
Plate Protectors		
8 x 10 inches	1 per package	B2160-8M
10 x 12 inches	1 per package	B2160-10
Cassettes		
8 x 10 inches	1 per package	74190-8
10 x 12 inches	1 per package	74190-10
Plate Transfer Box	1	73470
Power Supply	1	B7095
Line Cord	1	73096
6-Foot Computer Connector Cable, USB	1	B3554
15-Foot Computer Connector Cable, USB	1	B5026

\* One re-usable Release Liner is included in each box of ScanX Cleaning Sheets.

Air Techniques and ALLPRO Imaging are leading manufacturers of fine dental, medical and veterinary equipment from air and vacuum systems and X-ray film processors, to an impressive line of new products incorporating the most recent technological advances. These new products, vital components of the innovative professional practice, include intraoral cameras, digital imaging systems, which utilizes phosphor plate technology and, most recently, an intraoral digital X-ray system using sensor technology.

Air Techniques and ALLPRO Imaging have been manufacturing quality products for the dental, medical and veterinary professional since 1962.

Air Techniques and ALLPRO Imaging products are distributed only through authorized dealers. Refer to [www.airtechniques.com](http://www.airtechniques.com) or [www.allproimaging.com](http://www.allproimaging.com) to find a dealer in your area.

- Accent™ Intraoral Digital X-ray Image System
- Acclaim® USB Only Intraoral Digital Video Camera System
- Acclaim® Intraoral Digital Video Camera System
- AirStar®
- A/T 2000® XR
- Guardian™ Amalgam Collector
- Peri-Pro®
- Rinsendo Root Canal Disinfection System
- ScanX®
- STS™
- VacStar™

**AIR  
TECHNIQUES**

1-800-AIR-TECH  
(1-800-247-8324)  
[www.airtechniques.com](http://www.airtechniques.com)

- 100 Plus
- 2010
- Medscope
- Provecta V
- ScanX® 12
- ScanX® DVM
- ScanX® 12 DVM
- ScanX® NDT
- ScanX® 12 Portable
- ScanX® 14 Portable
- ScanX® NDT Portable
- ScanX® 14 In-Counter

**ALLPRO IMAGING**

1-800-AIR-TECH  
(1-800-247-8324)  
[www.allproimaging.com](http://www.allproimaging.com)