

scanX QUANTUM®

Digital Imaging System

Quick Start Instructions

Thank You and Congratulations on your purchase of the ScanX Quantum Digital Imaging System, a rugged portable imaging system manufactured by Air Techniques, Inc. for ALLPRO Imaging. Each system has been designed and manufactured using state-of-the-art technology to produce the lightest, most rugged and dependable digital imaging system available for the demanding conditions encountered in portable radiography applications.

This document provides abbreviated instructions to setup and operate the ScanX. Refer to the Operator's Manual (P/N D5471) included as a PDF file on the Drivers and Utilities Disk (P/N D5475) for complete instructions to ensure that your ScanX gives the highest level of service.

Although each ScanX has been designed to minimize exposure of personnel to hazards, users must exercise every precaution to ensure personnel safety, and be familiar with the warnings and cautions presented below and throughout the supplied Operator's Manual.

Use of Accessory Equipment.

The use of ACCESSORY equipment not complying with the equivalent safety requirements of this equipment may lead to a reduced level of safety of the resulting system. Use of ACCESSORIES or cables other than those specified or provided by the manufacturer may result in increased EMISSIONS or decreased IMMUNITY of the EQUIPMENT.

Electrical Safety Notes.

- The main power switch is the main power disconnect device.
- Use only the line cord provided with the unit.
- Use only grounded electrical connections.
- Check the device cables for possible damage before switching on. Damaged cables, plugs and sockets must be replaced before use.
- Do not locate unit where it could be sprayed with water, or in a damp environment.

Do Not Attempt Internal Service.

The interior of each component of the ScanX is only accessible by removing hardware with tools and should only be opened and serviced by an authorized dealer service technician. Contact your ALLPRO Imaging authorized dealer for service. Failure to heed this directive may result in equipment damage and voiding the warranty.

Laser Class Warning.

The ScanX is a Class 1 Laser Product [Class 1 Laser Product (IEC 60825)]

The warning label shown on the right identifies the ScanX as such a product and describes the potential danger to humans in the event the product is opened during service. There is no laser radiation from this product when operated and maintained as instructed.

The Laser Product Accession Number is 0212282-00



Customer-Supplied Computer and Imaging Software

To operate the ScanX, it must be connected to a compliant Computer System, and the computer must be loaded with an authorized Imaging Software. See the Operator's Manual for the minimum computer system requirements necessary to operate the ScanX. Contact your dealer for available Computer System and Software options.

In addition to imaging software authorized for the ScanX, USB device drivers must also be installed on the computer in order to operate the associated ScanX. The USB device drivers are provided on the Drivers and Utilities Disk (P/N D5475) included with each unit. Also refer to the *SYSTEM SETUP* section of the Operator's Manual included on the Drivers and Utilities Disk for installation information for device drivers.

BOX CONTENTS

Unpacking

As listed below, each ScanX System is shipped in a single carton containing the ScanX main assembly and associated accessory kit. Unpack each component of the ScanX and inspect for physical damage such as scratched panels, damaged connectors, etc.

If any damage is noted, immediately notify your ALLPRO Imaging authorized dealer immediately so corrective action can be taken. Save all cartons and packing materials to protect the ScanX in the event of future transport or shipping.

Included System Components

Each ScanX system consists of the indicated main assembly and accessory kit as listed. Refer to the *TECHNICAL DATA* section of the Operator's Manual included on the Drivers and Utilities Disk for ratings and identification for specific ScanX models. Verify that all listed items were received. If any item is missing, notify your dealer.

System Components - ScanX Quantum, P/N D5000-Q

Quick Start Instructions	D5471Q
<u>Accessory Kit containing:</u>	D5492
Brush Kit	D5027
Dust Cover	D5262
6-Foot USB Cable	D5226
10-Foot Power Cord	61035
Size 0 Plate Guides, Pack of 4	D5231
Size 1 Plate Guides, Pack of 4	D5232
Size 2 Plate Guides, Pack of 4	D5233
Size 3 Plate Guides, Pack of 4	D5234
Size 4 Plate Guides, Pack of 4	D5235
<u>Accessory Literature Kit:</u>	D5492-LIT
Sample ScanX Cleaning Sheet Kit	B2030
CD Disk containing Drivers, Utilities and Operator's Manual	D5475

Important

Make sure to read and follow the Operator's Manual (P/N D5471) included as a PDF file on the Drivers and Utilities Disk (P/N D5475) to ensure that your ScanX gives the highest level of service.

SETUP & OPERATION

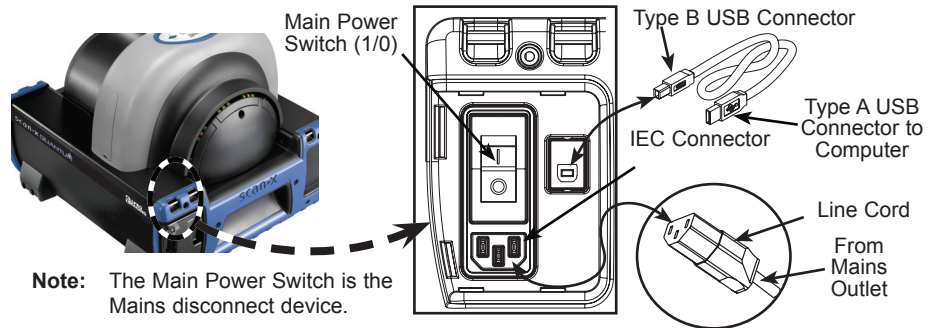
ScanX Drivers and Utilities Installation

Before connecting the ScanX to your computer or attempting to use it for the first time, run the Setup program on the ScanX Drivers and Utilities Disk (P/N D5475) included with the ScanX. Normally, this program runs automatically when the CD is inserted into the drive for the first time. If not, run the Setup program located in the root directory of the CD (typically **D:\AutoRun.exe**).

ScanX Connections

As shown by the illustration at right, connecting the ScanX for operation consists of the following Setup program on the ScanX

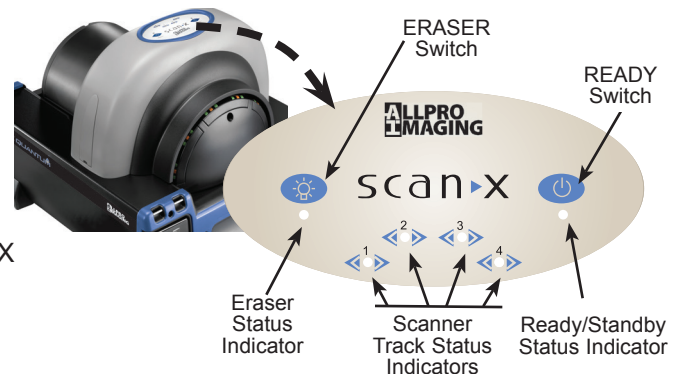
1. Connect the ScanX to the computer via supplied USB cable.
2. Connect the ScanX to power source via supplied line cord.



ScanX Operation

Operate the ScanX connected to a properly set up computer as follows:

1. Place the ScanX rocker switch to the ON (I) position.
2. Press the READY switch to turn ON the ScanX.
3. Verify that the READY indicator illuminates.
4. Activate the scanner via the Imaging Software.
5. Verify that all track status indicators illuminate green.
6. Minimize exposure to ambient light and insert the PSP into the ScanX inlet with the sensitive (front) side of PSP towards the ScanX.
7. Verify that all track status indicators illuminate yellow.
8. Observe that the scanned PSP exits through the scanner arch.



Corporate: 1295 Walt Whitman Road | Melville, New York 11747- 3062
Phone: 800-247-8324 | Fax: 888-247-8481

West Coast: 291 Bonnie Lane, Suite 101 | Corona, CA 92880 - 2804
Phone: 800-247-8324 | Fax: 951-898-7646

Website: allproimaging.com

